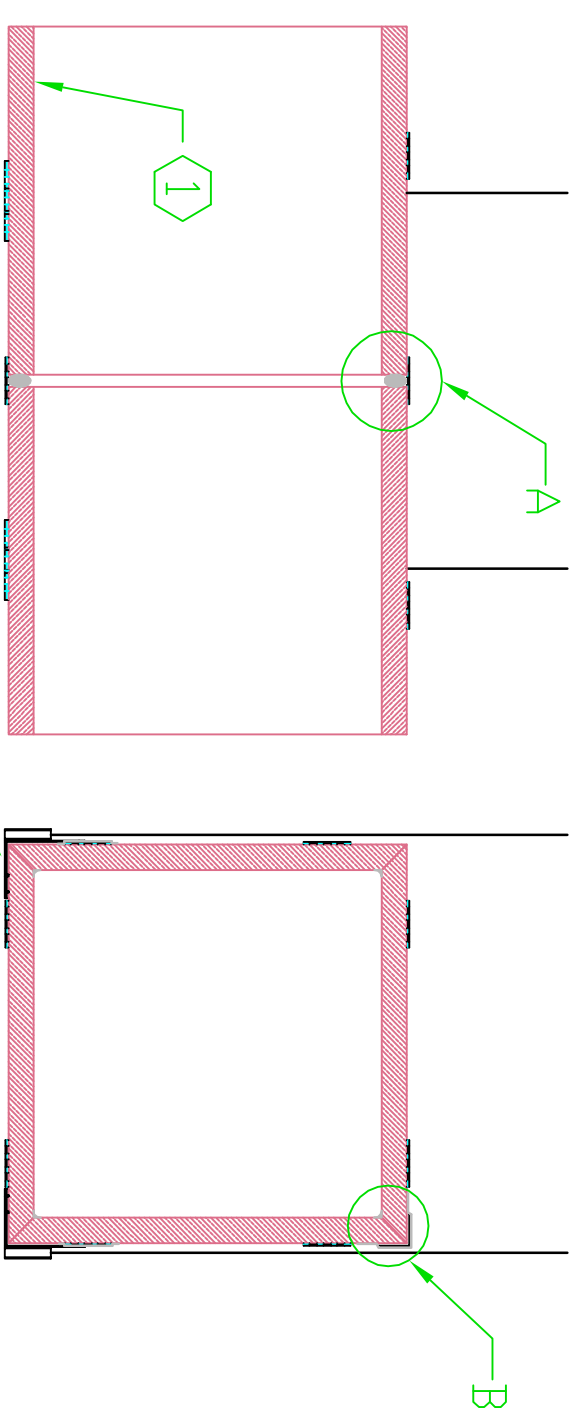
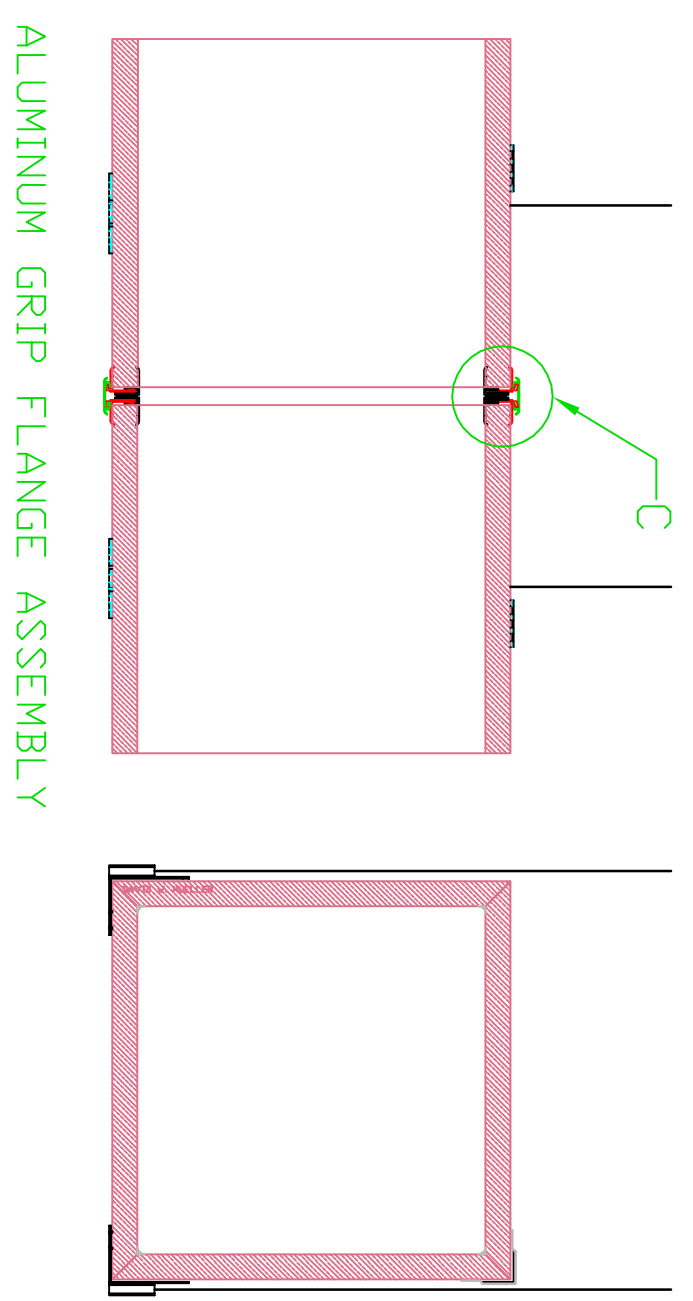
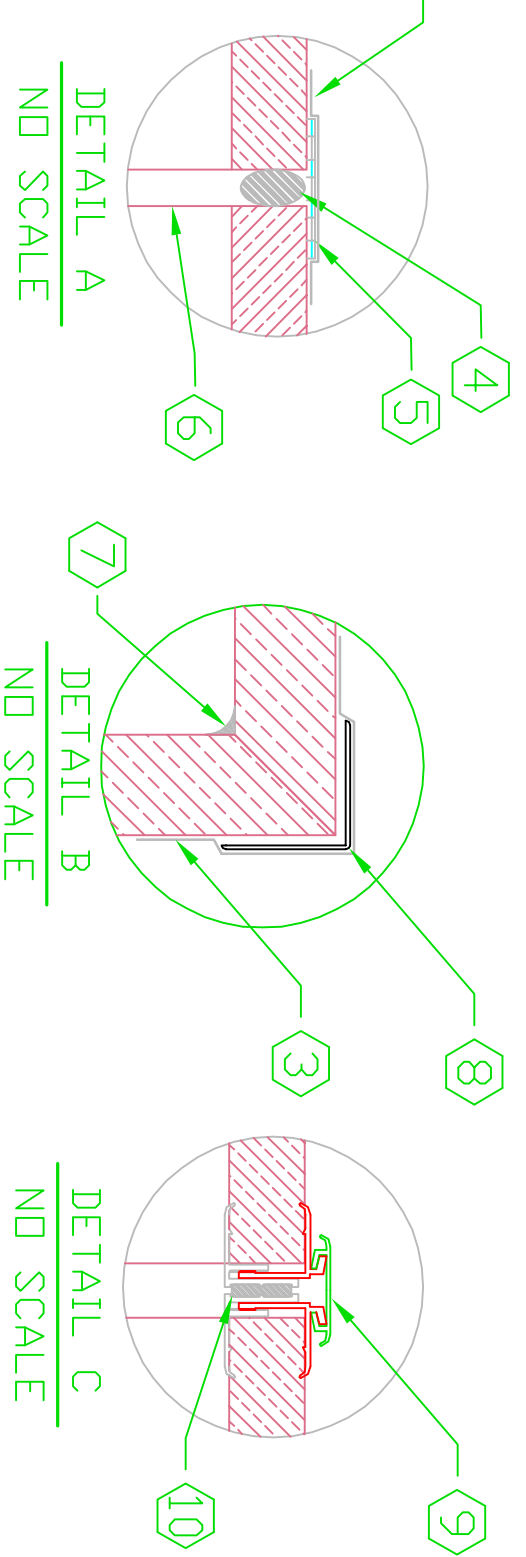




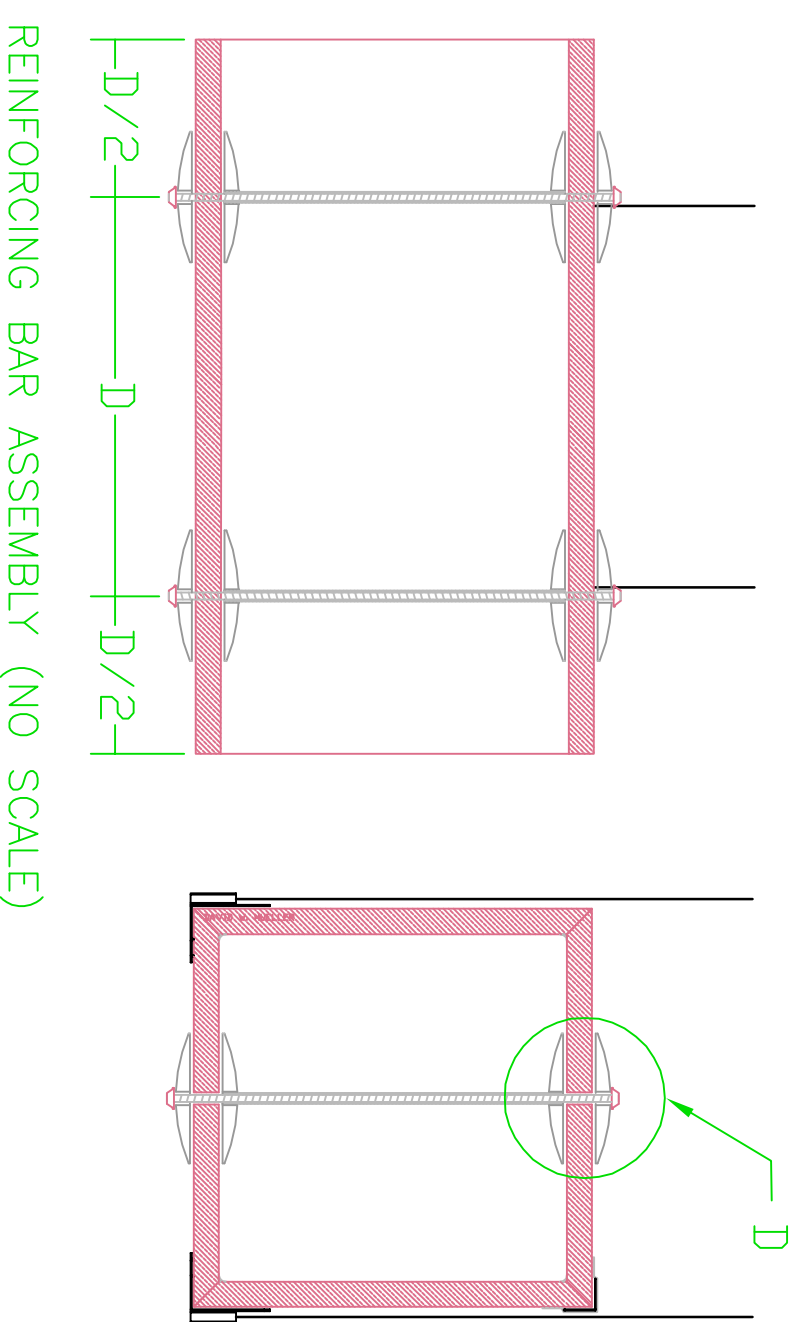
Kingspan® Koolduct®



ALUMINUM TIGER CONNECTION SYSTEM
FOR STATIC PRESSURES X<2' W.C. & I.D. DIMS X<24'

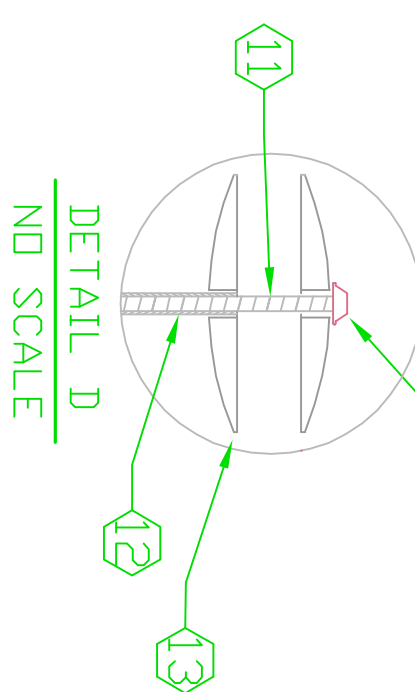


ALUMINUM GRIP FLANGE ASSEMBLY

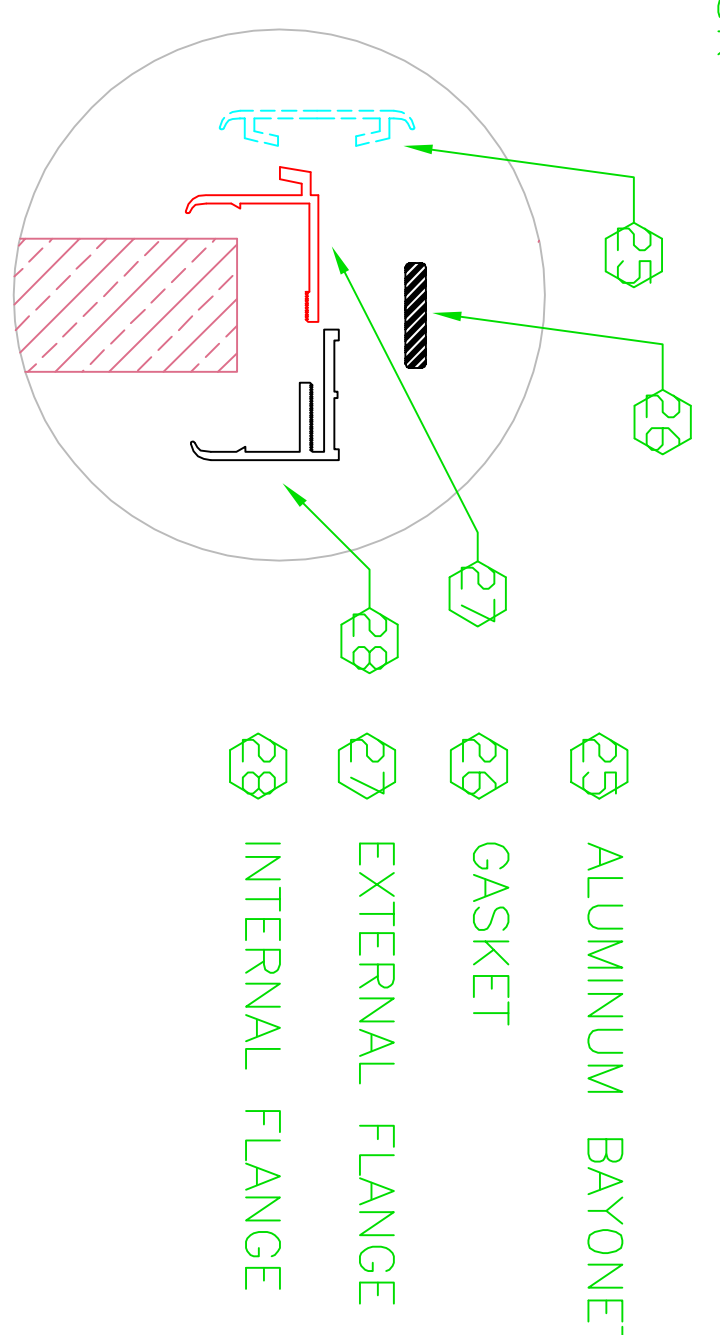


REINFORCING BAR ASSEMBLY (NO SCALE)

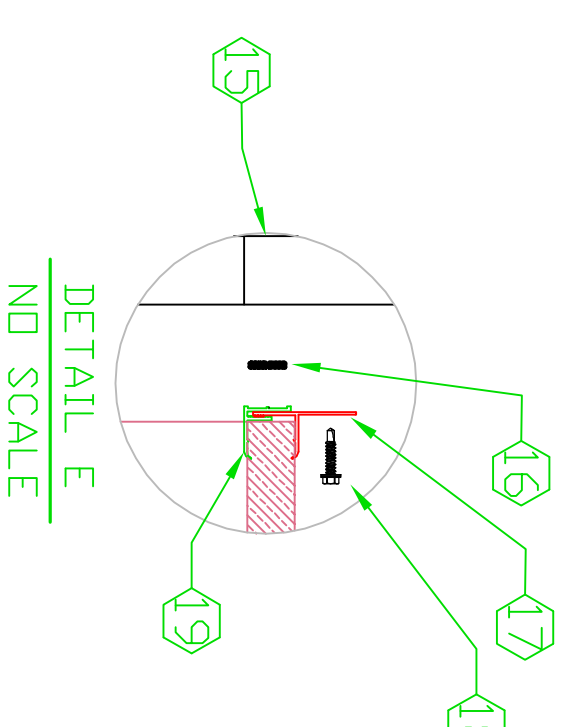
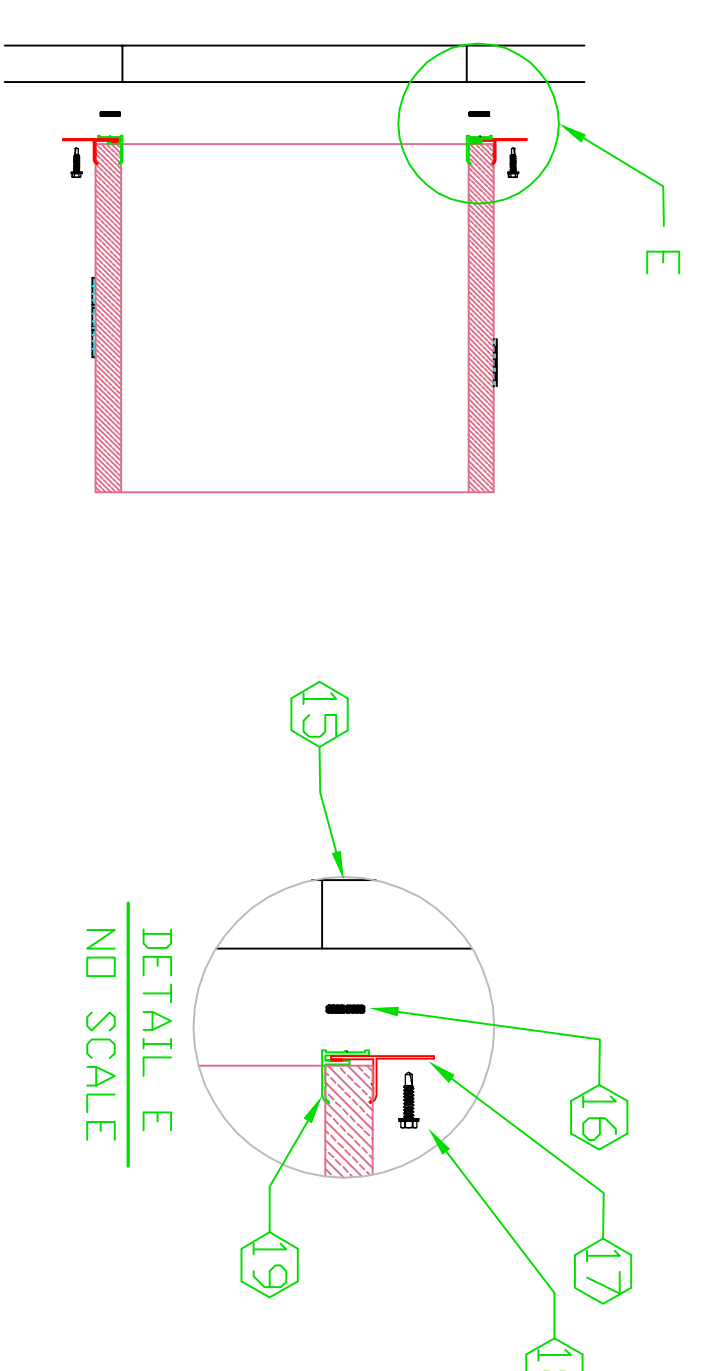
- ① IECC 2006 COMPLIANT PANEL, R6 AND R8.1 THERMAL RESISTANCE, SMACNA CLASS 3 LEAKAGE.
- ② HANGER SUPPORTS ARE A MAX OF 13' O.C. OR SUPPORTED ON BOTH SIDES OF DUCT JOINT, SUPPORT MUST BE A MINIMUM OF #12 ACOUSTICAL CEILING WIRE
- ③ ALL CLOSURES ARE TO BE COVERED WITH 3" UL 181-P TAPE
- ④ KINGSPAN APPROVED SILICONE BEAD SEALING JOINTS BETWEEN DUCT SEGMENTS.
- ⑤ CLOSURE FOR DUCTS LESS THAN 24" INTERNAL DIMENSIONS AND LESS THAN 2" W.C.
- ⑥ ALL EXPOSED PHENOLIC COVERED WITH UL 181-P FOIL TAPE FORMING A BARRIER FROM AMBIENT AIR
- ⑦ KINGSPAN APPROVED SILICONE BEAD APPLIED FULLY SEALING LENGTH OF DUCT ACHIEVING A SMACNA CLASS 3 RATING AND COMPLIANT TO USGBC RULE 1168 FOR LEED CREDITS.
- ⑧ CORNERS NOT SUPPORTED BY SCRIM ARE GLUED AND TAPED OR USE OF APPROVED CLOSURE AND TAPE FULLY ALONG SEAM. CLOSURES ARE 2' O.C.
- ⑨ APPROVE BAYONET AND FLANGE ASSEMBLY FOR DUCTS GREATER THEN 24" ID OR ANY DUCTS WITH GREATER THAN 2" W.C.
- ⑩ KINGSPAN APPROVED GASKET MATERIAL TO SEAL DUCT TO SMACNA CLASS 3
- ⑪ INNER REINFORCING BAR, REFER TO SCHEDULE
- ⑫ OUTER REINFORCING BAR, REFER TO SCHEDULE
- ⑬ REINFORCING DISK
- ⑭ SPEED CLIP



DETAIL D
NO SCALE

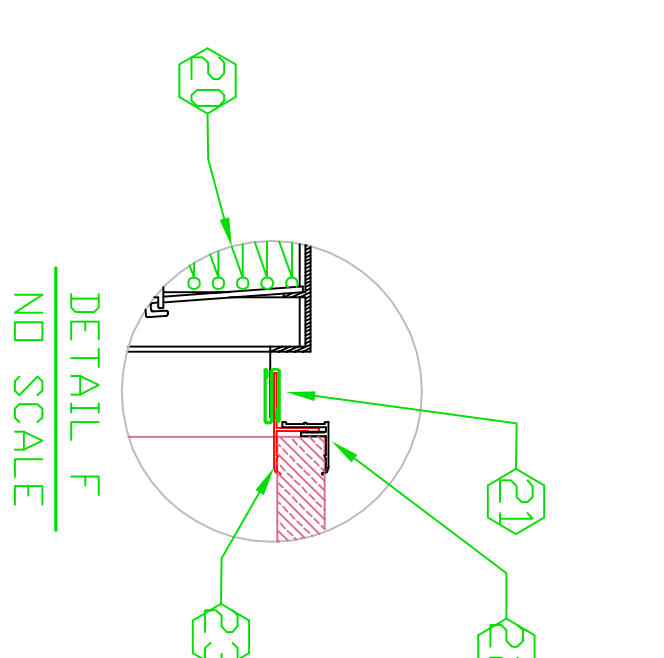
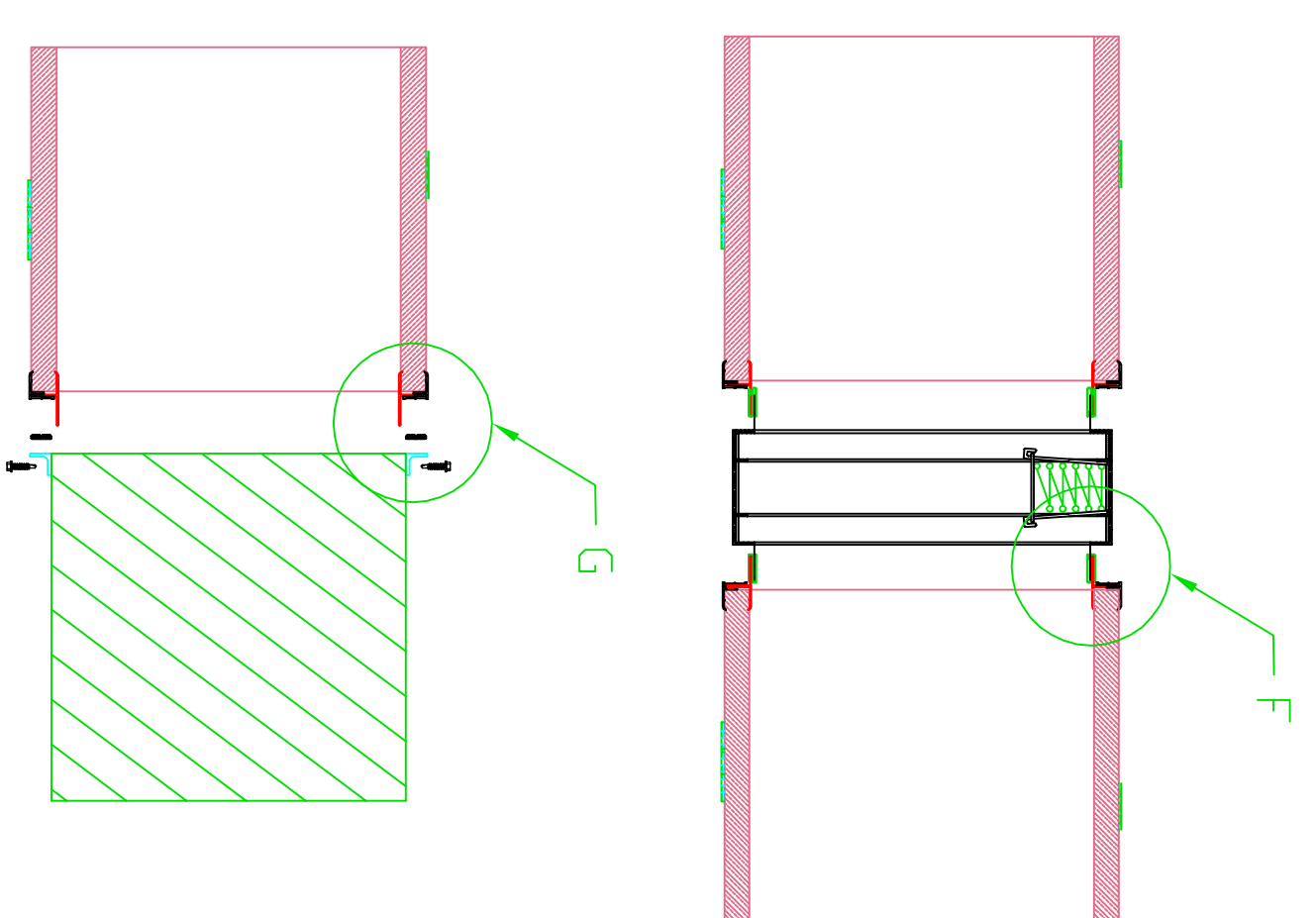


FLANGE ASSEMBLY (NO SCALE)



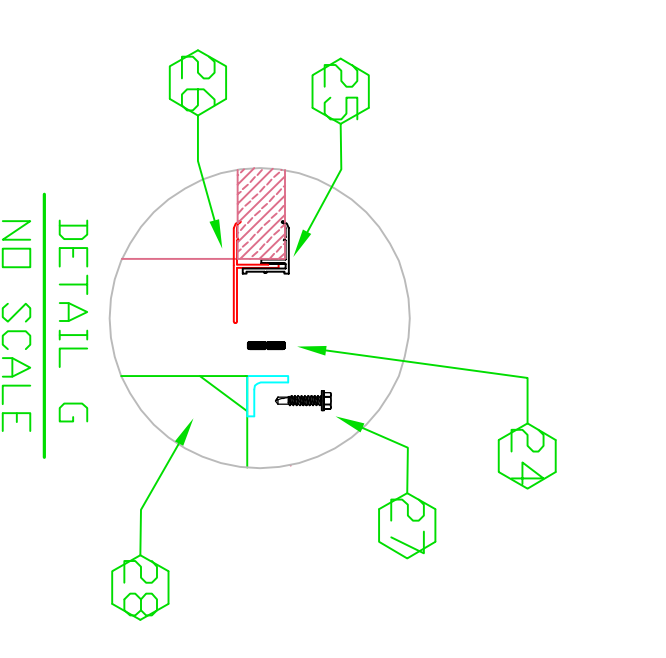
DETAIL E
NO SCALE

- ⑮ UNIT
- ⑯ GASKET
- ⑰ F FLANGE
- ⑱ SHEETMETAL SCREW
- ⑲ INTERNAL FLANGE
- ⑳ SMOKE AND FIRE DAMPER



DETAIL F
NO SCALE

- ⑳ SHEETMETAL S DRIVE
- ㉑ INTERNAL FLANGE
- ㉒ GASKET
- ㉓ INTERNAL FLANGE
- ㉔ CHAIR FLANGE
- ㉕ SHEETMETAL SCREW
- ㉖ SHEETMETAL DUCT



DETAIL G
NO SCALE

USGBC LEED CREDITS TABLE
-E.A. PREREQ 2: MINIMUM ENERGY PERFORMANCE
-E.A. CREDIT 1: OPTIMIZE ENERGY PERFORMANCE
-E.A. CREDIT 5.4: EMISSION REDUCTION REPORTING
-E.A. 3.1: OPTIMIZE USE OF IAQ PRODUCTS
-E.A. 3.2: OPTIMIZE USE OF IAQ PRODUCTS